



DECISION
SUPPORT
TOOLS

SQL

Server Configuration Guide

This document contains guidance for the configuration of the software for a SQL Server database.

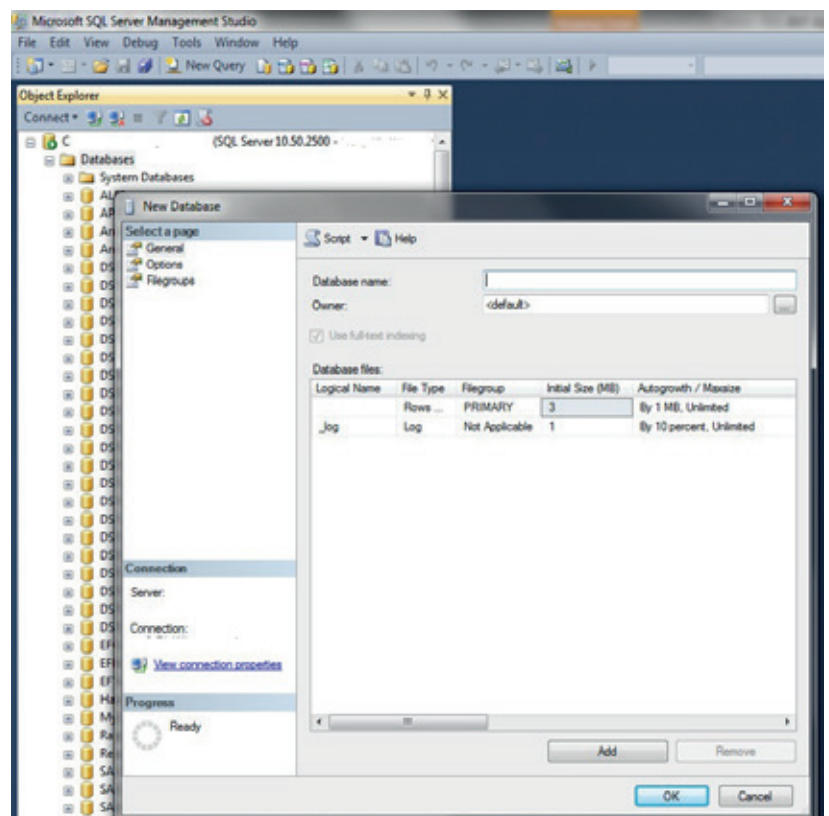
Note that these instructions are a guide and that the process may vary between organisations depending on operating system and database software versions as well as organisation policies.

1. Support and feedback

If there are any software installation or licensing problems please contact:
techsupport@decisionsupporttools.com or +44 (0)1635 299200

2. SQL Server configuration

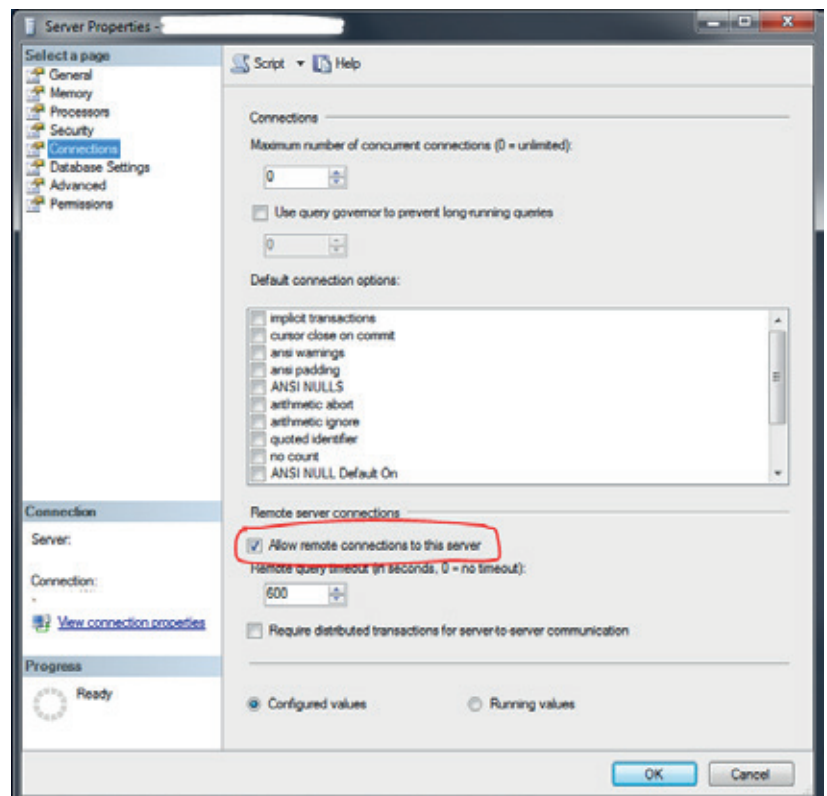
1. Create a Database



2. Ensure remote connections are enabled (if required).

It may also be necessary to configure client access via e.g. TCP/IP and open port 1433 (by default).

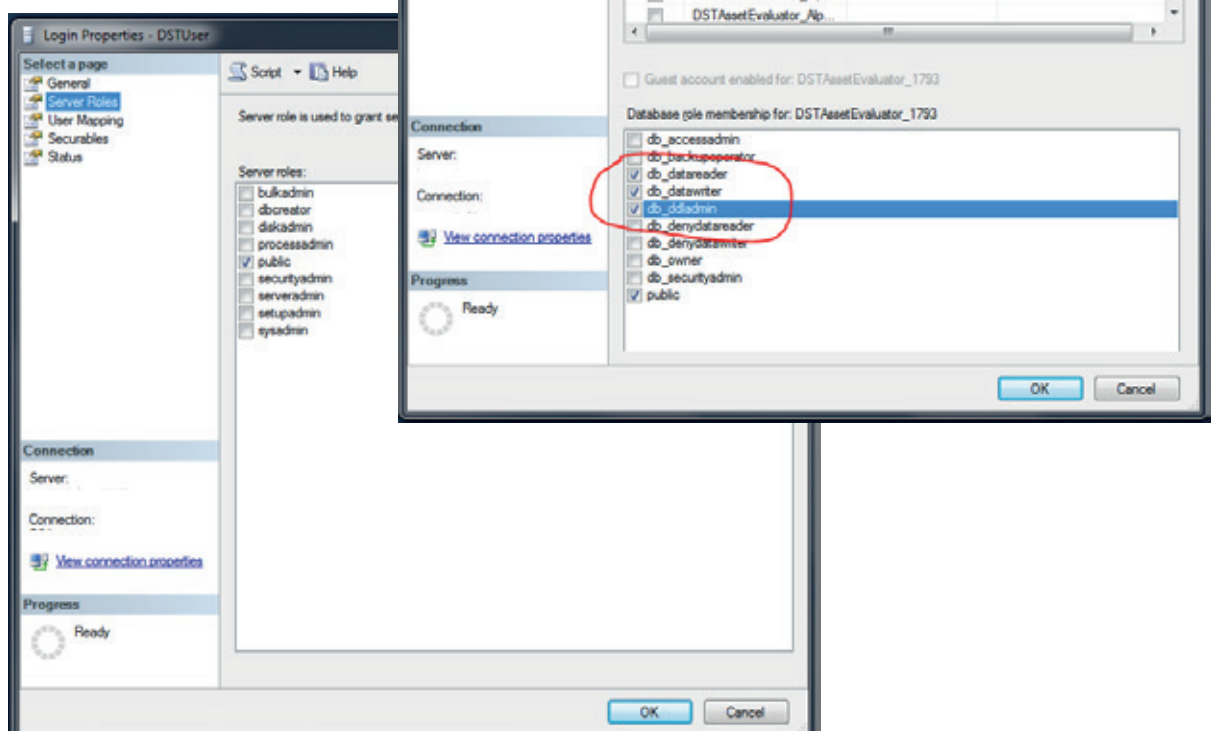
See also <https://msdn.microsoft.com/en-us/library/ms345343.aspx>



3. Configure user permissions:
Either Windows or SQL user

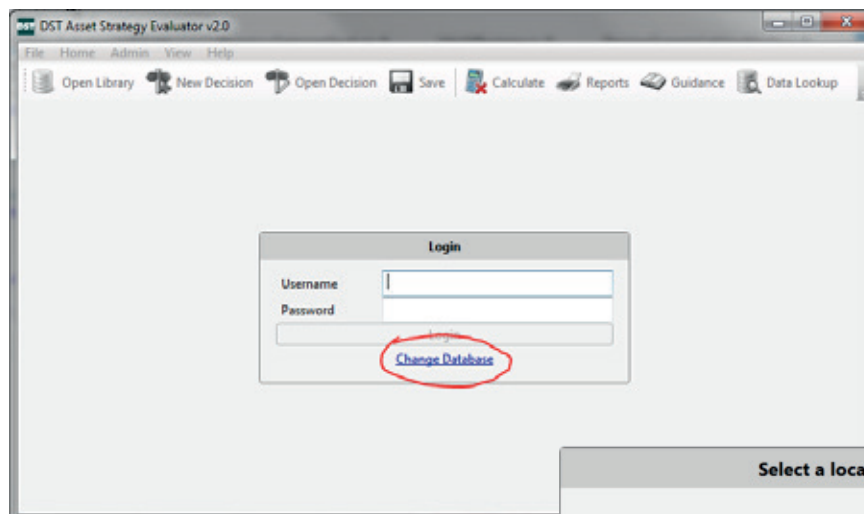
Server role = public

Database role membership =
db_datareader, db_datawriter,
db_ddladmin, public



3. Software configuration

The database structures will be created by an administrator on first use of the software. Once the software is installed and licensed the software administrator will launch the software and confirm connection to the database.



3.1 Manual configuration of the software database connection

To configure the database connection manually (necessary if using a mixed-mode SQL Server User prior to version 2.1) it is necessary to edit the configuration file for the software;

The configuration file is located in:

e.g. **C:\Users\<username>\AppData\Local\Decision Support Tools Ltd\DST Asset Strategy Evaluator v2.0**

The configuration file is called

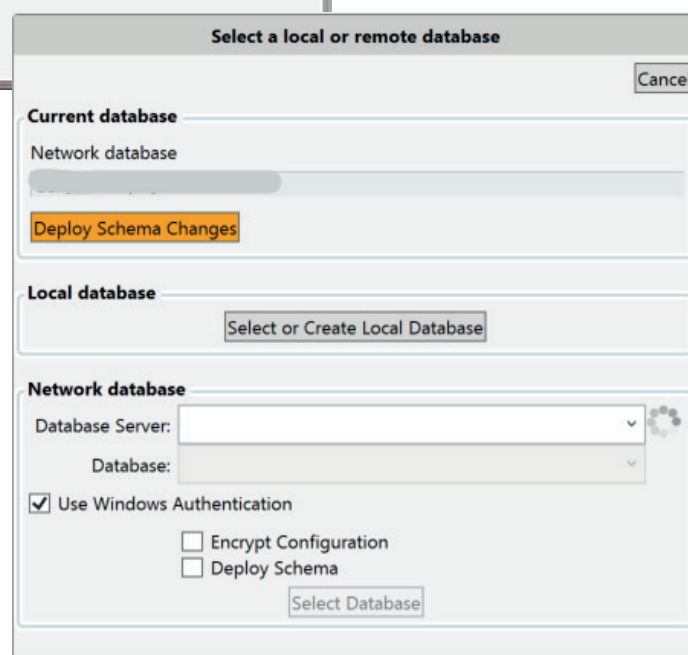
DST Asset Strategy Evaluator.exe.config

Edit this file using a text or xml editor.

Edit the connectionStrings section:

e.g. **<connectionStrings>**

```
<add name="DSTAssetEvaluator_Alpha" connectionString="Data Source=<server>;Initial
Catalog=<database name>;Integrated Security=False;User ID=<sql user>;Password=<password>"
providerName="MSSqlServer" />
</connectionStrings>
```



4. Troubleshooting

Symptom

Cannot connect client software to the database

Cannot log in to software

Action

Ensure the client can access the database independently of the software using a tool such as OSQL, SQL Server client tools, MS Excel

Default software credentials are:

User – admin

Password – PA\$\$WORD

