



DECISION
SUPPORT
TOOLS

v4

Science-based decision-making
just got more accessible and intuitive

For over a decade, **Decision Support Tools (DST)** has been at the forefront of providing leading edge decision support to asset-owning organizations – harnessing the power of decision science to empower better asset lifecycle decision making in high impact situations.

As with any hard-working asset, the time has come for a refurbishment and some upgrades, to reflect changing stakeholder expectations.

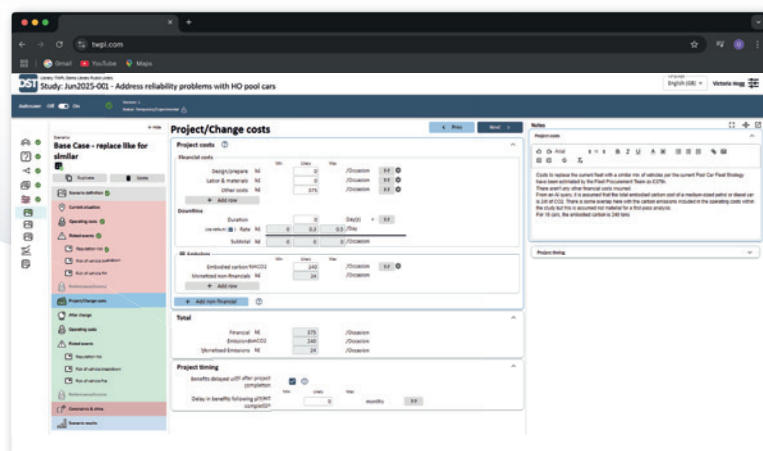
Now, we're excited to unveil **DST v4**, the latest upgrade designed to elevate your decision-making capabilities and experience to the next level.

Why choose DST v4?

- **Always Up-to-Date:** Enjoy hassle-free installation and updates with our browser-based platform.
- **Modern Look & Feel:** Experience a sleek, intuitive user interface with clear visuals that simplify your user experience.
- **Effortless Library Management:** With everything stored in the cloud, you can easily search and collaborate, and enjoy seamless saving and version control.
- **New Value Framework Functionality:** DST v4 comes with a predefined Value Framework, which you can easily reconfigure to reflect your own framework, supporting consistent quantification of non-financials, plus effortless alignment with any sustainability or ESG reporting requirements.

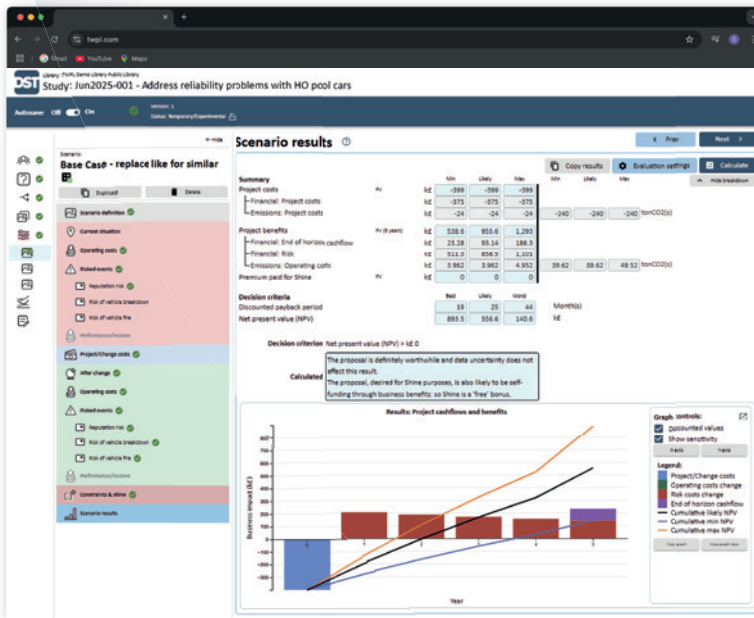


Front-end dashboard



Typical input screen

- **Enhanced SALVO Process Support:** Introducing the new SALVO Step 1 “Hopper” module to identify and prioritize risks, problems, opportunities, and improvements. Improved storyboards facilitate problem definition and exploration of alternative solutions (SALVO Steps 2 and 3).
- **User-Friendly Transition:** DST v4 retains all the best features of DST v3, ensuring a smooth learning curve for existing users.
- **Advanced Statistical Results:** Benefit from improved statistical features across all modules.
- **Web-Based Study Reports:** Share user-friendly, up-to-date reports effortlessly.
- **Embedded Workflow Management:** Manage validations, approvals, and implementation tracking directly within the tool, with insightful dashboards just a click away.
- **Seamless Data Integration:** Enjoy easier integration with various data sources.



Scenario results screen

What our testers say...

The software has a clean, modern design and I particularly like the layout of the front-end dashboards."

The overall navigation experience was smooth and user-friendly"

Overall, I'm impressed with the look and feel of the software.

It's intuitive and easy to navigate and I'd like to congratulate the team on their work."

Release timeline

We are rolling out DST v4 in phases to incorporate feedback from early modules and ensure a smooth transition for users.



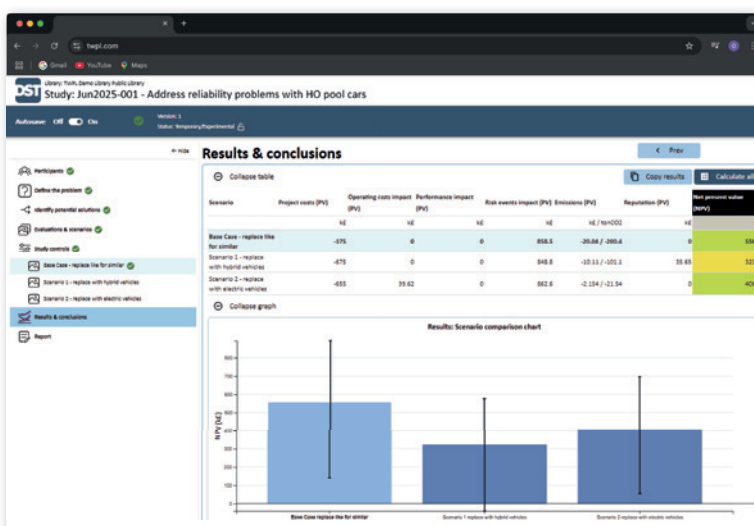
June '25



March '26



October '25



Study results screen

Early release modules available now!

Contact us to arrange a demo or speak to our sales team. Special deals are available for pre-orders on future releases.

Get Started Today!

Contact us to:

Arrange a Free Demonstration: Identify potential opportunities for implementation in your business (2-hour duration).

Get a Taster Study: Understand how the tools work and quantify potential business benefits through application to a small number of current problems or opportunities (typically 2-3 days duration).

Book a Proof-of-Value Pilot: Evaluate a sample of problems or opportunities up to the point of implementation (typically 10-12 weeks duration), offering the best 'try before you buy' experience.

The Woodhouse Partnership exists to help clients deliver greater value, consistently and sustainably. With 30 years of success and experience in most industry sectors, we hold firm to our core values:



Innovation

We pioneer the standards that others follow. We are open-minded lateral-thinkers, able to identify and resolve new problems with new solutions.



Flexibility

We adapt and combine solutions to suit each client's needs, context and culture. Our approach is always pragmatic, realistic, and effective.



Personal

Our clients benefit from effective transfer of knowledge and development of their staff skills and capabilities. We will earn your respect, trust and loyalty.



Experienced

Our team provides unrivalled first-hand experience in all aspects of asset management; in almost all industries, regions & cultures.

Visit www.twpl.com to find out more



(804) 426 5595



(372) 5479 6979



+44 1635 298 800



+ 61 400 014 917



+44 1635 298 800

Registered office: The Woodhouse Partnership Ltd, RSK Group, 172 Chester Road, Helsby UK | enquiries@twpl.com | www.twpl.com

© The Woodhouse Partnership Ltd